



The southern tiger cat



@guarah

Considered until recently as a subspecies of *Leopardus tigrinus*, *Leopardus guttulus* was recently recognized as a valid species based on genetic and morphological studies (Trigo et al. 2013a, Nascimento & Feijó 2017). Source: Instituto Pró-Carnívoros, 2022.



Photo: Tadeu Gomes de Oliveira (Mirador State Park, Brazil)

With regard to its sister species, the macambira cat, tends to have a slightly more robust size, shorter and thicker tail and variable coat color, with shades between light yellow and yellowish-brown, in shades that tend to be darker than in the northern species of the country. Rosettes tend to be larger and ears smaller and more rounded (Trigo et al. 2013a, Nascimento & Feijó 2017). Source: Instituto Pró-Carnívoros, 2022.

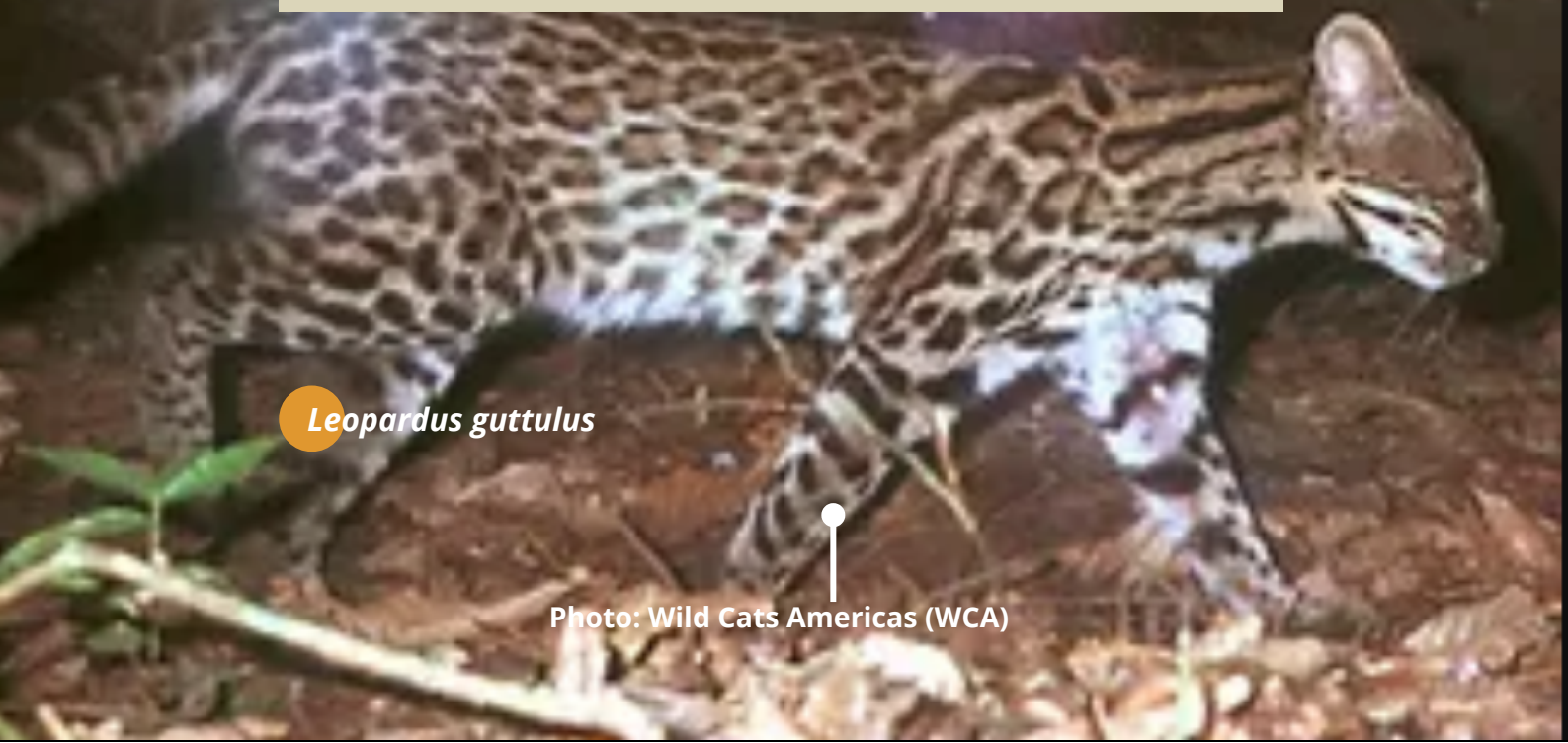


Photo: Wild Cats Americas (WCA)

In addition, its distribution also differs, positioning the two species in different territories of Latin America.



Leopardus tigrinus

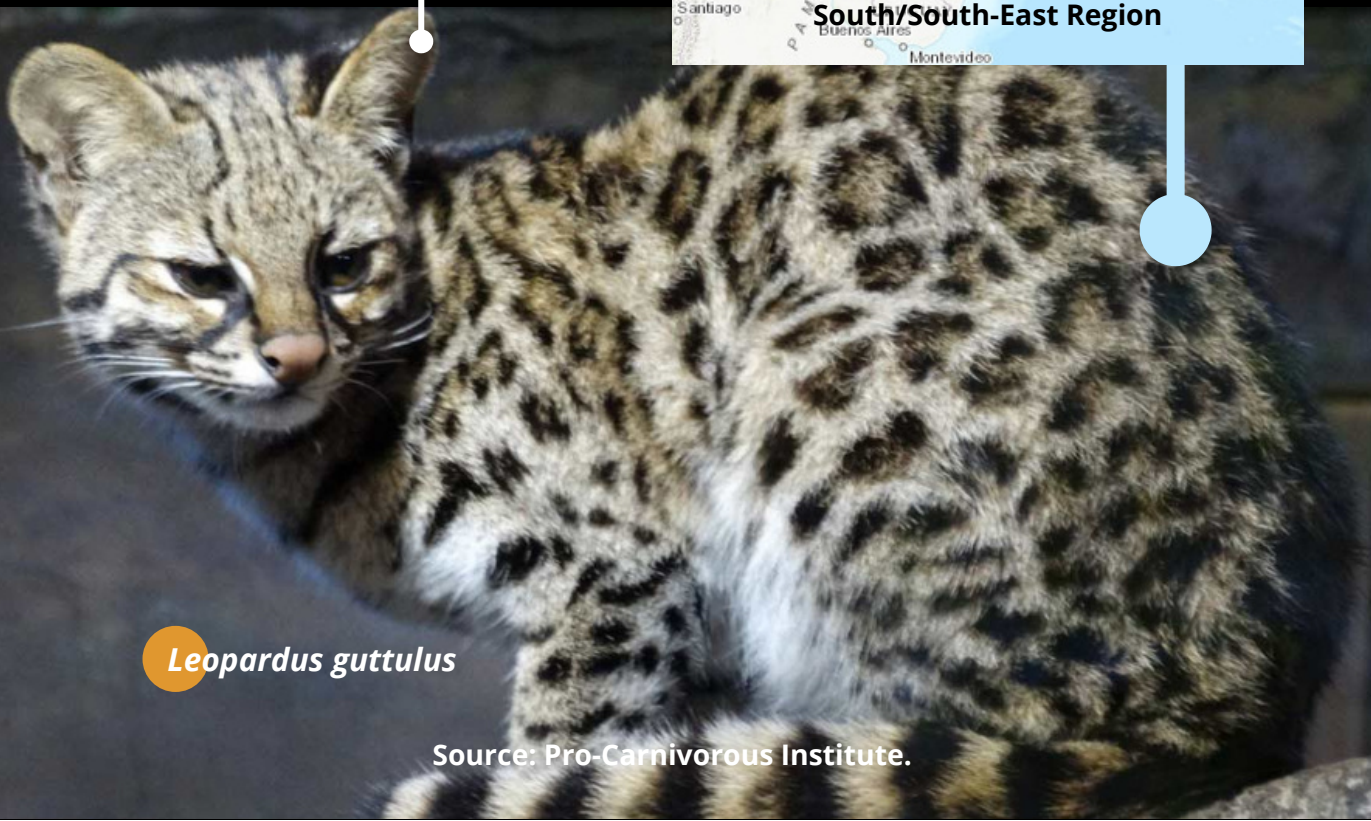


North/Northeast Region

Photo: Felipe Peters



South/South-East Region



Leopardus guttulus

Source: Pro-Carnivorous Institute.

Photo: Tadeu Gomes de Oliveira.

Leopardus guttulus



Photo: Wild Cats Americas (WCA)

The coat of the belly is pale covered with dark spots and the ears are black in the posterior part, with a white central spot. Melanism (all black coat) is relatively common in the species. The hairs are all turned backwards, including those of the head and nape (Oliveira & Cassaro 2005). Source: IPC, 2022.

Leopardus guttulus



Photo: Gustavo Pinto.

It occurs in the south, southeast and midwest regions of Brazil, in addition to Paraguay and northeastern Argentina (Nascimento & Feijó 2017). Its distribution mainly comprises Brazil, occurring in the Cerrado and Atlantic Forest domains, although it seems to be mainly associated with the last biome (Sartor 2020). Despite the general morphological differences described between the southern bush cat and the macambira cat, there is considerable variation within each species that often makes it difficult to accurately identify. Source: Instituto Pró-Carnívoros, 2022.

Leopardus guttulus

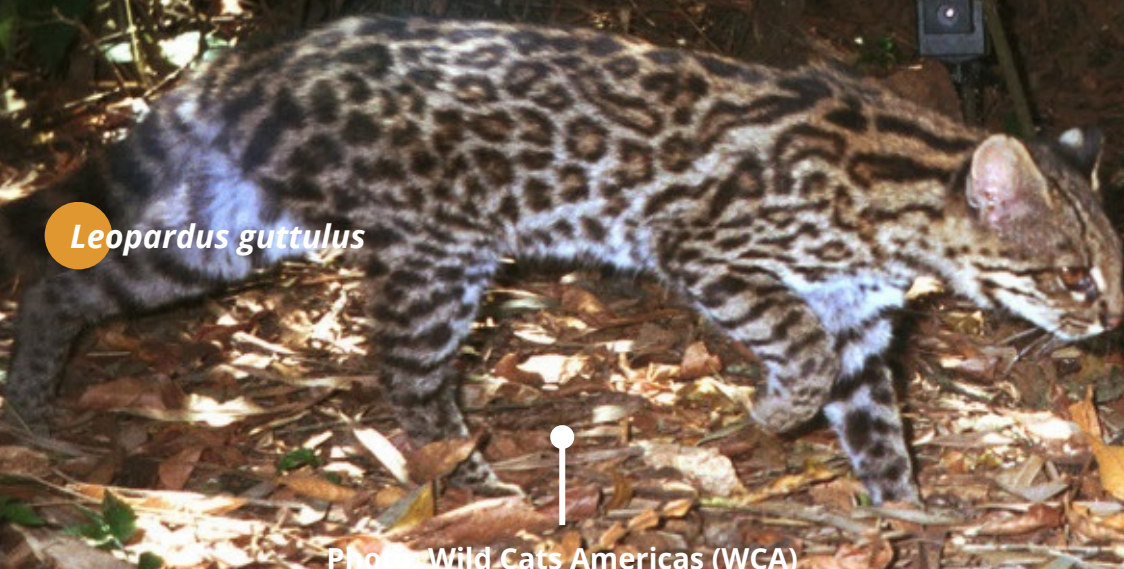


Photo: Wild Cats Americas (WCA)



Photo: Wild Cats Americas (WCA)

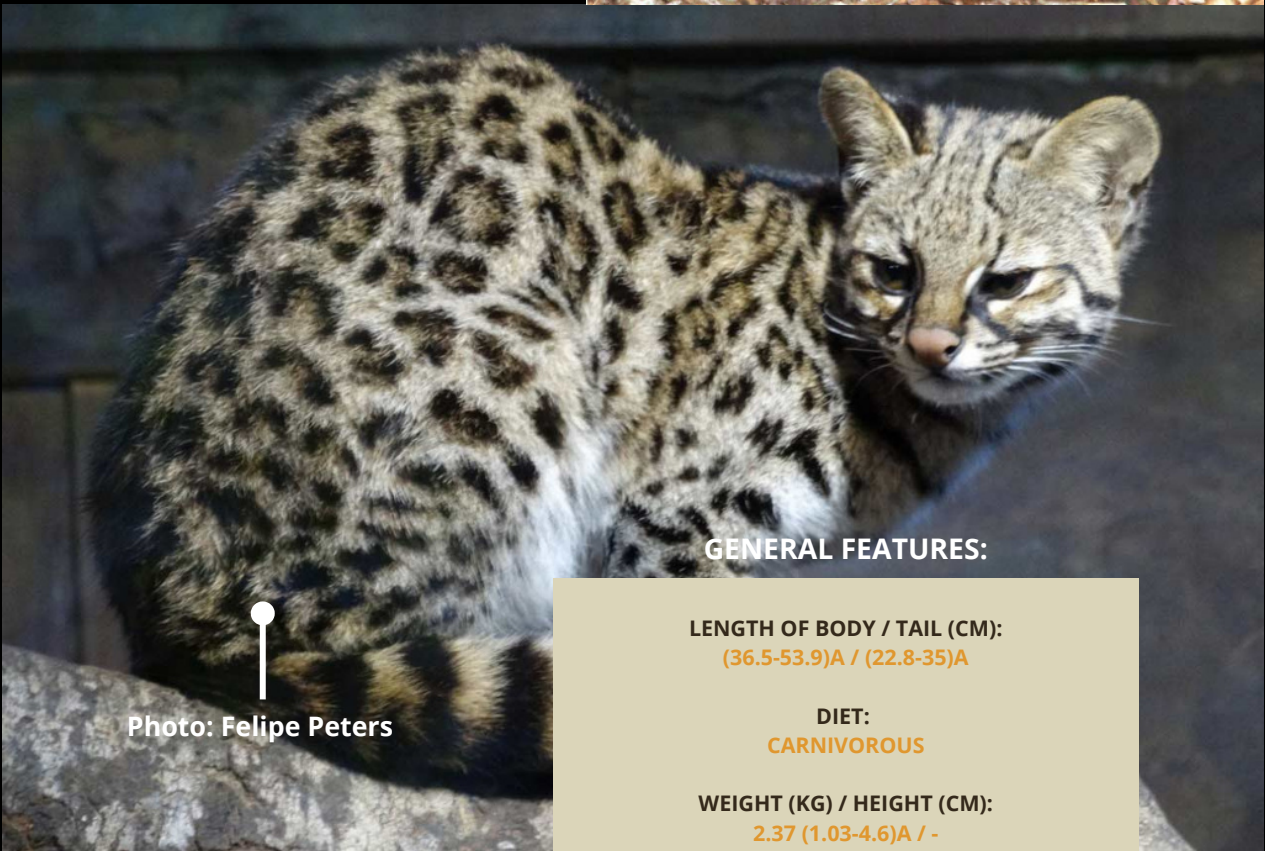


Photo: Felipe Peters

GENERAL FEATURES:

LENGTH OF BODY / TAIL (CM):
(36.5-53.9)A / (22.8-35)A

DIET:
CARNIVOROUS

WEIGHT (KG) / HEIGHT (CM):
2.37 (1.03-4.6)A / -

HOUSING AREA (KM2):
(2-25)B

NUMBER OF PUPPIES / PREGNANCY (DAYS):
(1-4) / (75-78)

LONGEVITY (YEARS):
11

SOCIAL STRUCTURE:
LONELY

ACTIVITY PATTERN:
NOCTURNAL AND DAYTIME/TWILIGHT

Source: Nascimento & Feijó 2017; b Oliveira et al. 2010; c Oliveira & Cassaro 2005



Photo: Gustavo Pinto.