
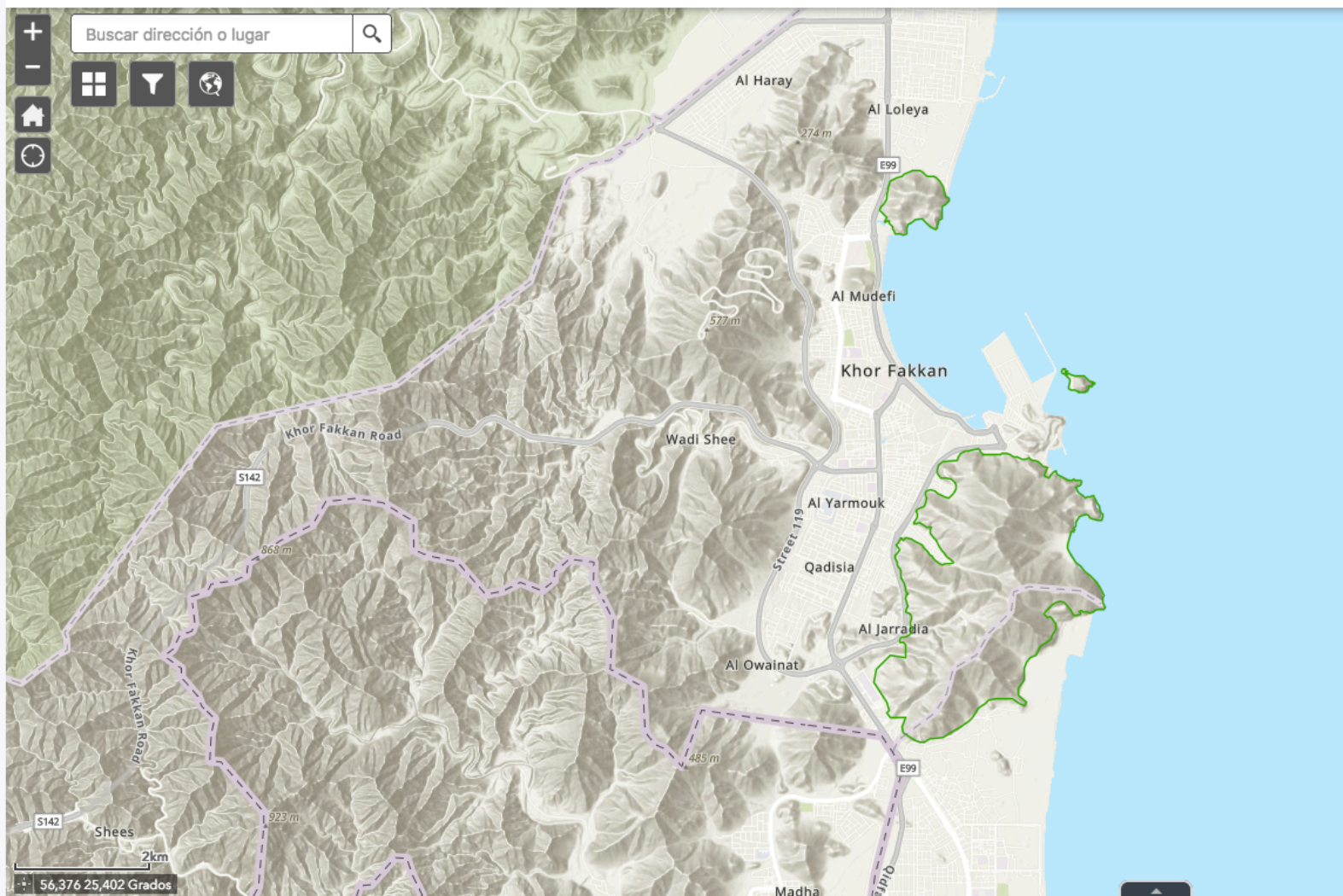


Map Search

[Open in a new window](#) 



Quick Links

[About KBAs](#)
[Working with KBAs](#)
[Explore Data](#)
[News](#)
[Cookie Policy](#)
[Terms of Service](#)

Site overview

KBA status: Confirmed

Global KBA criteria: A1a, B1

Year of last assessment: 2023

National site name: Khor Fakan and Shark Island

Central coordinates: Latitude: 25.3343, Longitude: 56.3768

System: Terrestrial

Elevation (m): 0 to 300

Area of KBA (km²): 9.295186

KBA classification: Global

Legacy site: No

Site details

Site description:
A coastal strip along with surrounding rocky hillocks and a small rocky island following the distribution of the potential species range for the Emirati Leaf-toed Gecko including the suitable habitats where the species is believed to be present.

Rationale for qualifying as KBA:
The site qualifies as a Key Biodiversity Area of international significance that meets the thresholds for at least one criterion described in the Global Standard for the Identification of KBA covering 2 of the 3 only known locations where the globally threatened (CR) species Emirati Leaf-toed Gecko (*Asaccus caudivolvulus*) is known to exist.

Manageability of the site: Environment & Protected Areas Authority (EPAA) is working on protecting the site along with mitigation plans.

Other site values: No

Delineation rationale: The site covers the remaining habitat of the type locality for the CR leaf-footed gecko.

Habitats

Land use: The KBA is not managed for conservation and is currently surrounded by development and urban areas from all sides